

SDRC

State Data
Resource Center

Part D PDE Data and the Opioid Epidemic

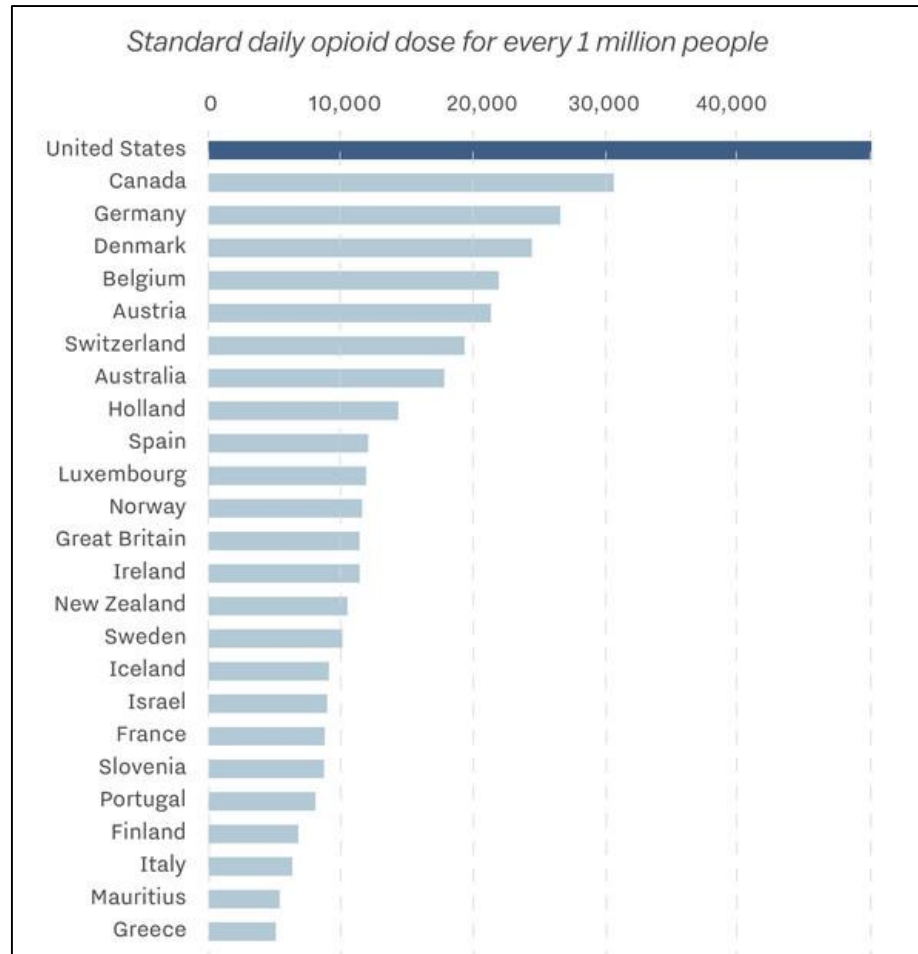
State Data Resource Center
Acumen, LLC

August 30, 2017 3:30-4:30pm ET

Outline

- Background Information on Opioid Use
- Helpful Part D Elements for Analysis
- How to Perform an Analysis
- How to Request Part D PDE Data
- Questions and Conclusion

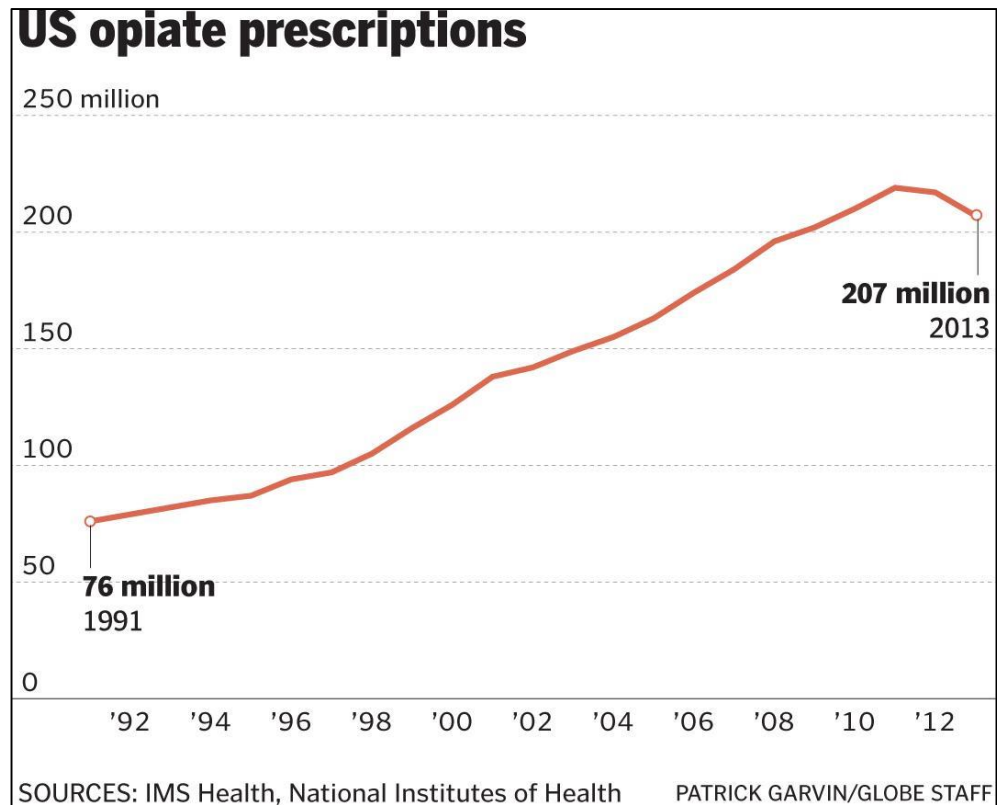
Opioids: USA vs. The World



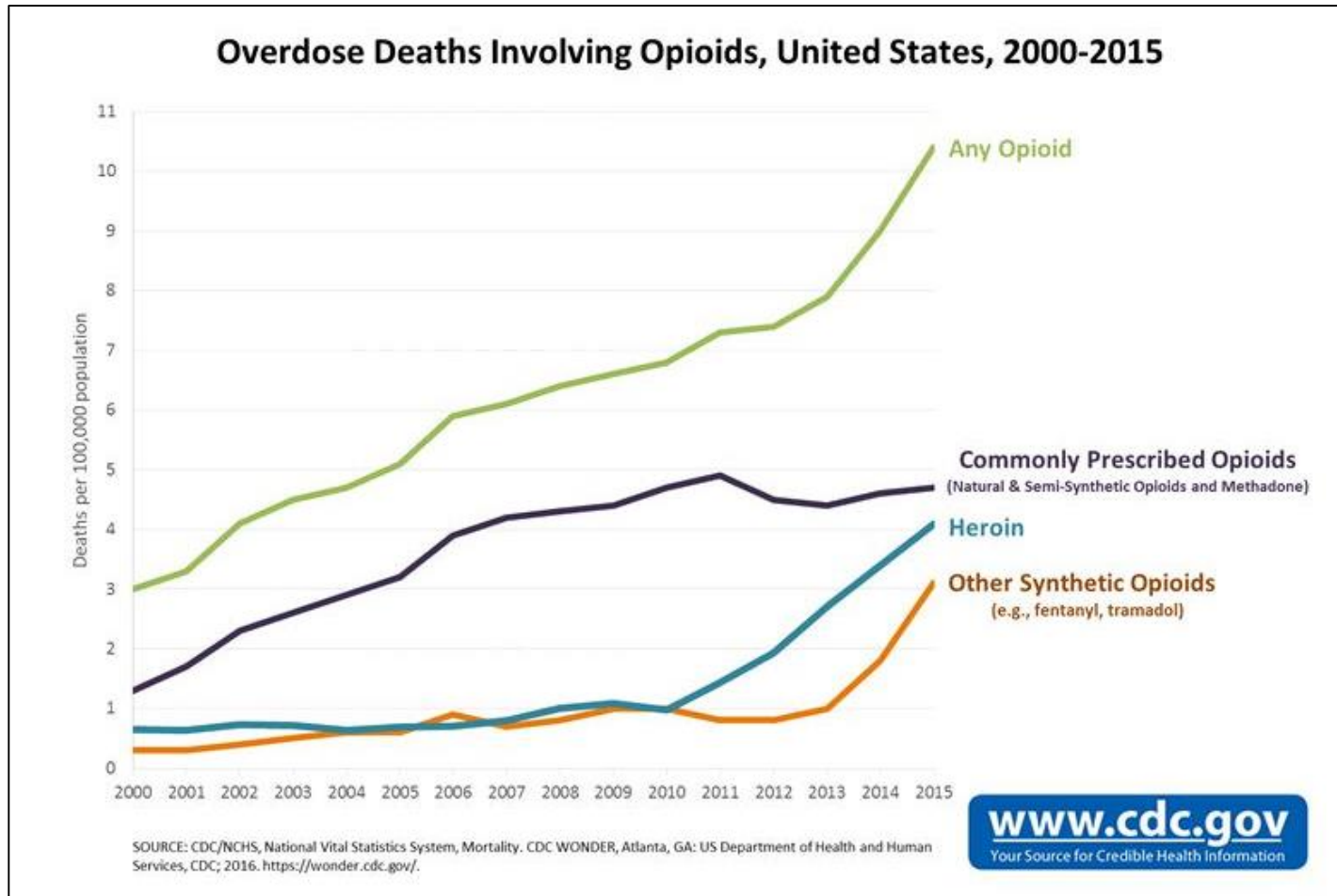
Source: United Nations International Narcotics Control Board

Credit: Sarah Frostenson

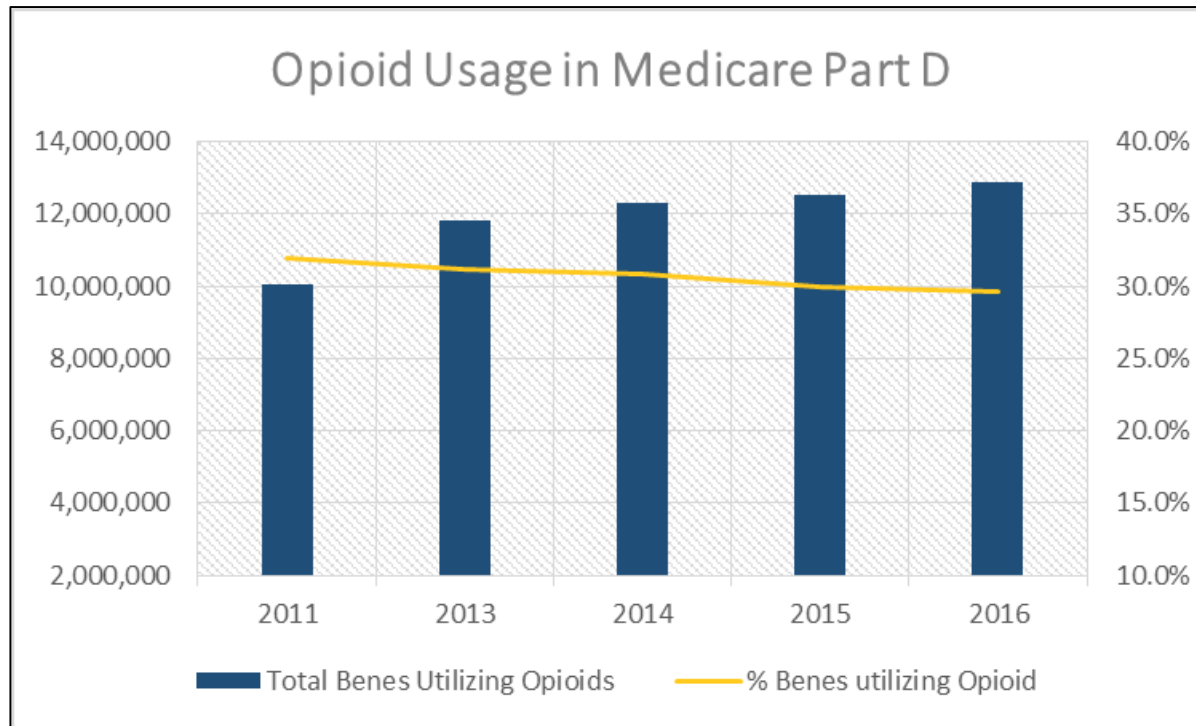
Opioids: US Opiate Prescriptions



Opioids: Overdoses Deaths



Opioid Use: Medicare Part D



Part D PDE: Overview

- The rows in the Part D Prescription Drug Event (PDE) file correspond to prescription fills (Prescription Drug Events).
- Data elements include:
 - National Drug Code (NDC);
 - Days' supply;
 - Quantity dispensed; and
 - Date of service.
- PDE includes all Medicare Part D beneficiaries, even those under Managed Care.
 - Must keep this in mind when using Part D data in conjunction with Parts A & B data, which contain only A/B Fee-For-Service (FFS) beneficiaries.

Part D PDE: Challenges and Limitations

- The version of the PDE file available to states does not include financial information, such as Medicare or beneficiary payments for drugs.
 - *Saving costs is not a permissible data use justification.*
- The NDC is available on the file, but an NDC crosswalk will be needed to make this field meaningful.
 - [First DataBank MedKnowledge](#) – very complete file you can pay for, with names, prices, and descriptions corresponding to each NDC.
 - Various Public Use Files (PUFs), such as [RxNorm](#) and [VA National Drug File](#)
 - Free but can be incomplete or difficult to work with.

Part D PDE: Final Action

- **Final action** refers to the process of choosing the most up-to-date version of a claim.
 - A PDE claim that was previously submitted may be declined or there may be an update or correction to information on the claim.
 - If final action isn't applied, the data will contain records with duplicate information.
- Requestors have the option of getting final action historic data or non-final action monthly data.

Part D PDE: Final Action (Continued)

- Final action historic data is easy to work with since final action has already been applied, but not very timely.
- Non-final action data is very up to date (about a month lag between claim processing and receipt of data), but states must apply the final action process.
 - Not very complicated and many resources exist to help states implement final action.

Resources	Locations
Part D Data Netting On-Demand Tutorial Video	SDRC Assistance Website (“Reference Docs” → “SDRC On-Demand Tutorials” → “SDRC Tutorial 11 – Part D Data Netting”)
Part D Netting Explanation Tip Sheet	SDRC Public Website (“Medicare Data Available” → “Data Dictionaries and File Layouts”)
Integrating Monthly Files into Part D Final Action Tip Sheet	

PDE Variables for Opioid Analysis

Variable Names	Descriptions	Examples
HICN	Unique Beneficiary Identification Number	000-00-0000
Days Supply	Days worth of drugs the prescription covers	3
Quantity Dispensed	Dosage units of medication dispensed	27
Date of Service	Date when a beneficiary picked up the prescription from pharmacy	24 MAY 2017
Product Service ID	Dispensed drug identified using NDC	12345678901
Service Provider ID	Pharmacy where the prescription was filled	1234567890
Service Provider ID Qualifer ¹	Type of provider identifier	01
Prescriber ID	Prescriber identification number	1234567890
Prescriber ID Qualifier	Type of prescriber identifier	01

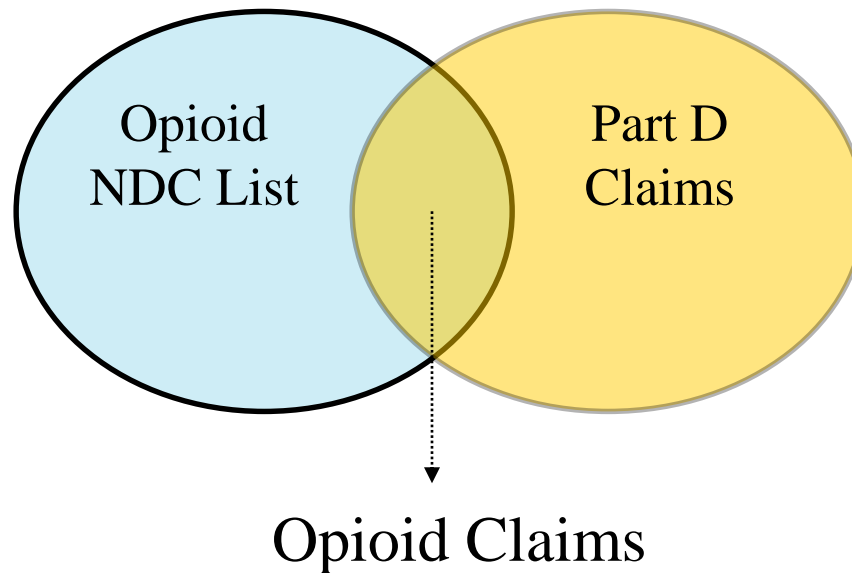
¹Starting from YOS 2015, all prescribers are in the NPI format. However, pharmacies still use varieties of format. Hence, it is useful to check the qualifier variable.

Opioid NDC List

- NDC is the drug identifier in Part D claims.
- Make a list of opioid NDCs by looking into opioid ingredients from publically available drug data such as RxNorm or proprietary databases, such as [Medi-Span](#) and First Databank.
- Morphine Equivalent Conversion factor for each opioid ingredient can be found in the [CDC list](#).
- Variables of interest:
 - Strength;
 - Unit of measure;
 - Drug ingredients;
 - Dosage form;
 - Route of administration;
 - Drug classification; and the
 - Opioid Morphine Equivalent Conversion Factor.

Opioid Claims

- Using the opioid NDC list, subset the PDE claims data to just opioid claims.
- Assign variables from opioid NDC list to opioid claims based on the NDCs in the claim dataset.



Morphine Equivalent Dosage (MED)

- Used to convert different opioid products with varying degrees of potency to a comparable dosage (“Morphine Equivalent”) unit.
 - For instance, 10mg of tramadol would be required to have the same potency as 1mg of morphine.
- Convert all strengths to the unit on the CDC list.
 - For instance, if a NDC has 5mg/0.5ml strength but the conversion factor is based off a unit of 1mg/ml, then the NDC strength needs to be changed to 10mg/ml.
- MED Daily Dosage = Opioid Strength x Opioid Conversion Factor x (Quantity Supplied / Days Supply)

Calculate MED Daily Dosage

From Part D Claims:

HICN	Claim #	Quantity Supplied	Days Supply	Date of Service	Number of Dosage Units/Day
A	1	20	4	01/01/2016	$20/4 = 5$
A	2	30	3	01/03/2016	$30/3 = 10$

From Opioid NDC List:

Opioid Strength	Opioid Conversion Factor	MED Daily Dosage
2	2	$5 \times 2 \times 2 = 20$
3	3	$10 \times 3 \times 3 = 90$

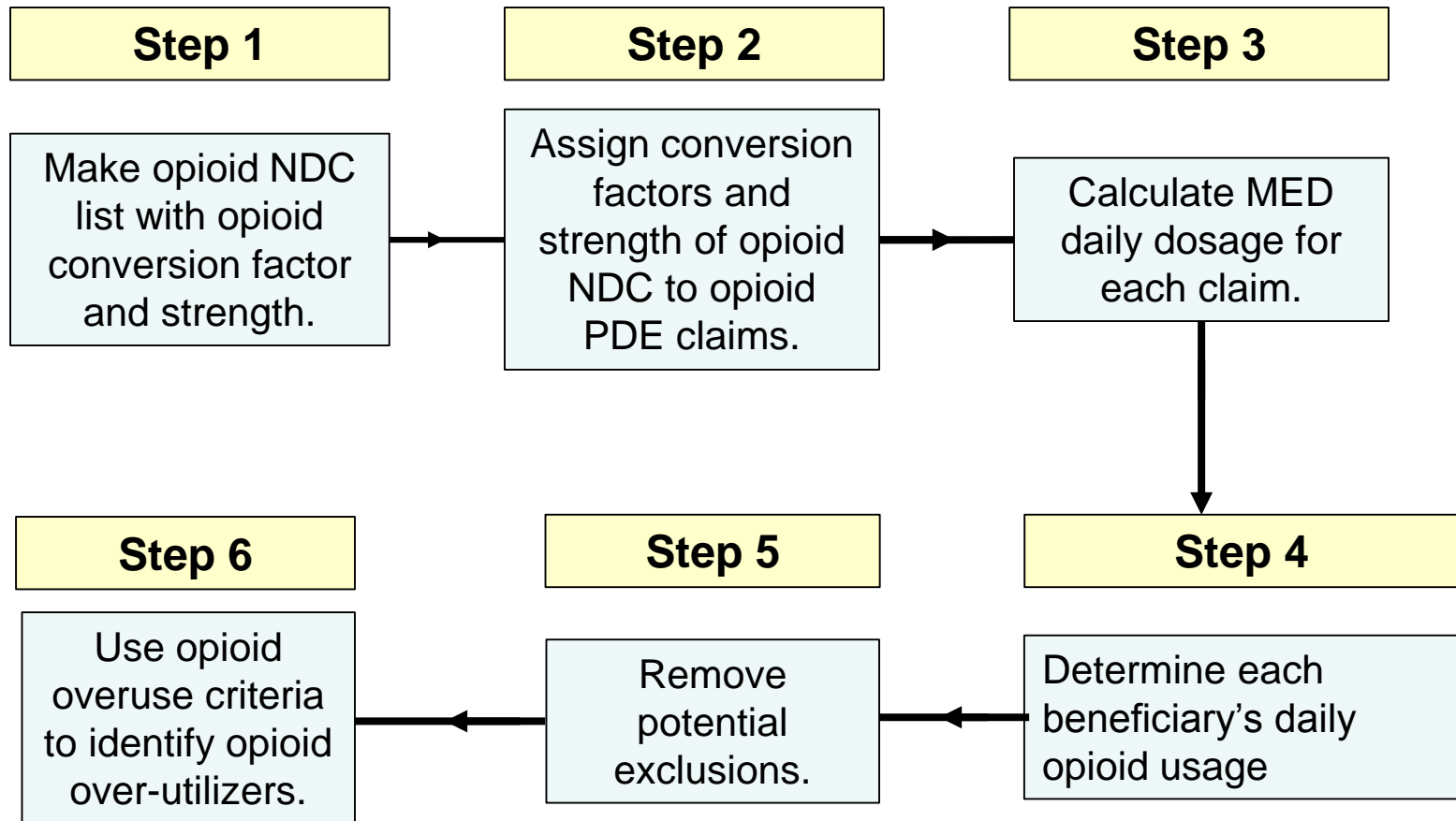
Potential Beneficiary Exclusions

- Beneficiaries with diagnoses or in a setting that legitimizes high opioid usage
 - The Master Beneficiary Summary File (MBSF) “Chronic Conditions” and “Other Chronic or Potentially Disabling Conditions” segments can be used to identify beneficiaries with some, but not all, such diagnoses.
- For the MBSF segment codebooks and record layouts, please visit the [CCW website](#).

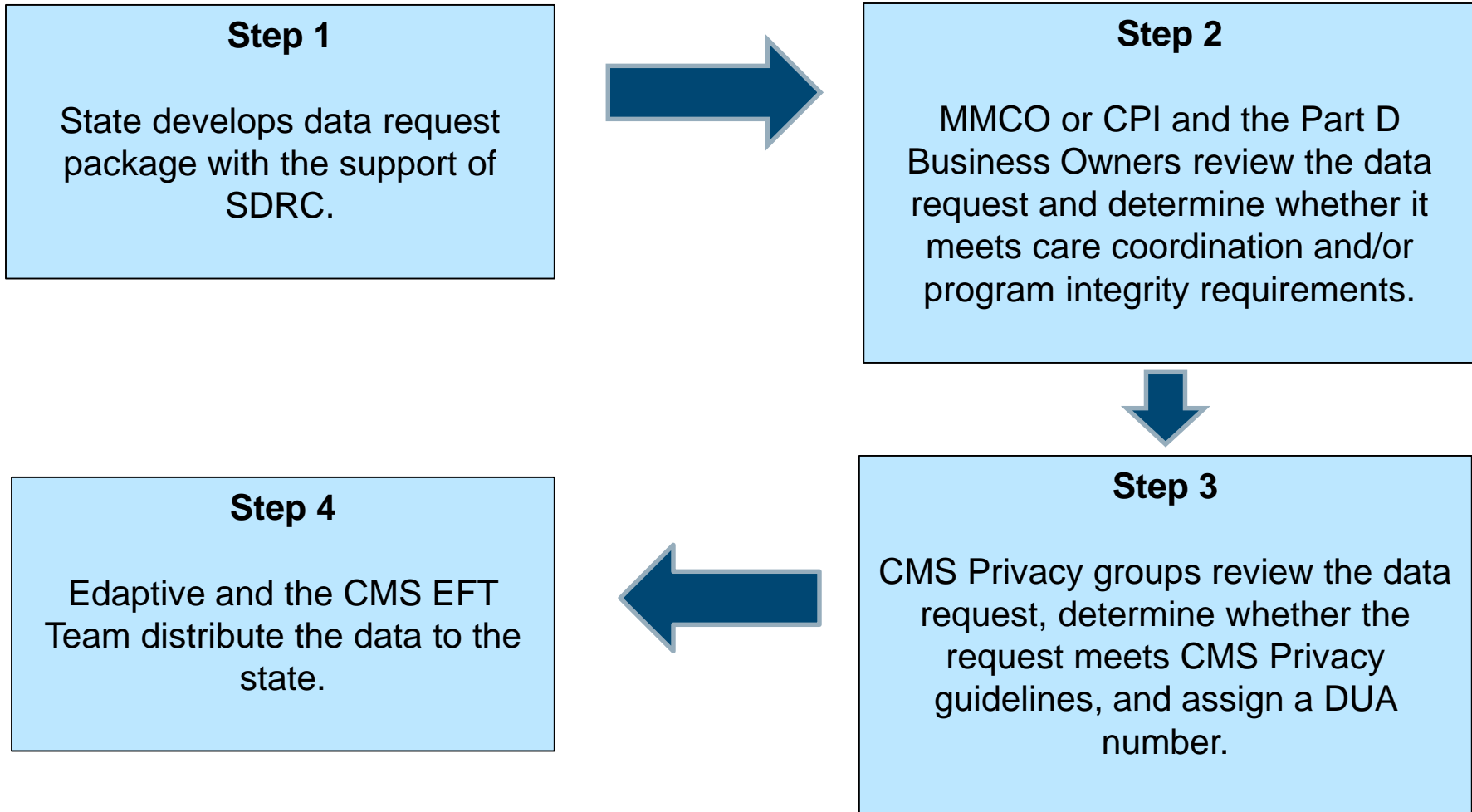
Potential Overuse Criteria

- High Duration of Usage
- High Intensity of Usage
- Pharmacy and Doctor Shopping Behavior

Opioid Analysis Process



Medicare Data Request Process: Part D PDE



Required Documents: Part D PDE

Data Agreements	Data Request Package	Downstream User Documents	Electronic File Transfer (EFT)
<u>Information Exchange Agreement (IEA)</u>	Cover Letter (<u>New</u> or <u>Additional Data Use</u>)	<u>DUA Addendum Form</u>	<u>VIIES EFT Setup Form</u>
<u>Data Use Agreement (DUA)</u>	<u>Specification Worksheet</u>	<u>DUA Attachment A Form</u>	<u>VIIES Partner Server Questionnaire Form</u>
		Conflict of Interest (COI) Letter (<u>No COI</u> or <u>Potential COI</u>)	

- These documents can be found on the SDRC Public website's ["Request Process Details"](#) page.

Data Request Package: SDRC Tips

- Always provide more detail than not enough.
- When using acronyms, please make sure to spell them out at the first mention.
 - E.g., “*SDRC*” should be “*State Data Resource Center (SDRC)*.”
- Address the package documents to speak to the specific data type that is being requested.
- Complete the documents so anyone at CMS, without any prior knowledge, can understand the request fully.

Data Request Package: SDRC Tips (Continued)

- Questions to Keep in Mind:
 - How does the proposed use justifications affect dual eligible beneficiaries at the individual level?
 - How does the lack of data hinder care coordination and/or program integrity initiatives in your state?
- Do not mention the prohibited HIPAA uses as proposed use justifications for your State Medicaid Agency.
 - Especially related to saving costs.
- SDRC will review data request package documents, answer any process- or data-related questions, and provide additional guidance to State Medicaid Agencies throughout the entire process.

Obtaining Access to the SDRC Assistance website

- State Medicaid Agency staff can send their full contact information (first and last name, work mailing address, work phone number, and work email address) to sdrc@econometricainc.com.

Questions

- Questions can be submitted through the GoToWebinar question text box.
- SDRC will read submitted general questions and provide answers
- If you have questions related to contractual requirements or specific to your state's situation, please email SDRC instead.
- Some inquiries may require additional research. SDRC will investigate these inquiries and reply via email.

Thank You



Questions can be submitted to SDRC at:
(877) 657-9889 (support line) or
sdrc@econometricainc.com.